

DDG-697 Project

Plaza
Drive

DDG Riggins 150 UPS

Riggins Avenue

DDG-402V

Merck

Goshen

Visalia/
Sequoia
National Park
KOA Journey

DDG-120V
(Building B)

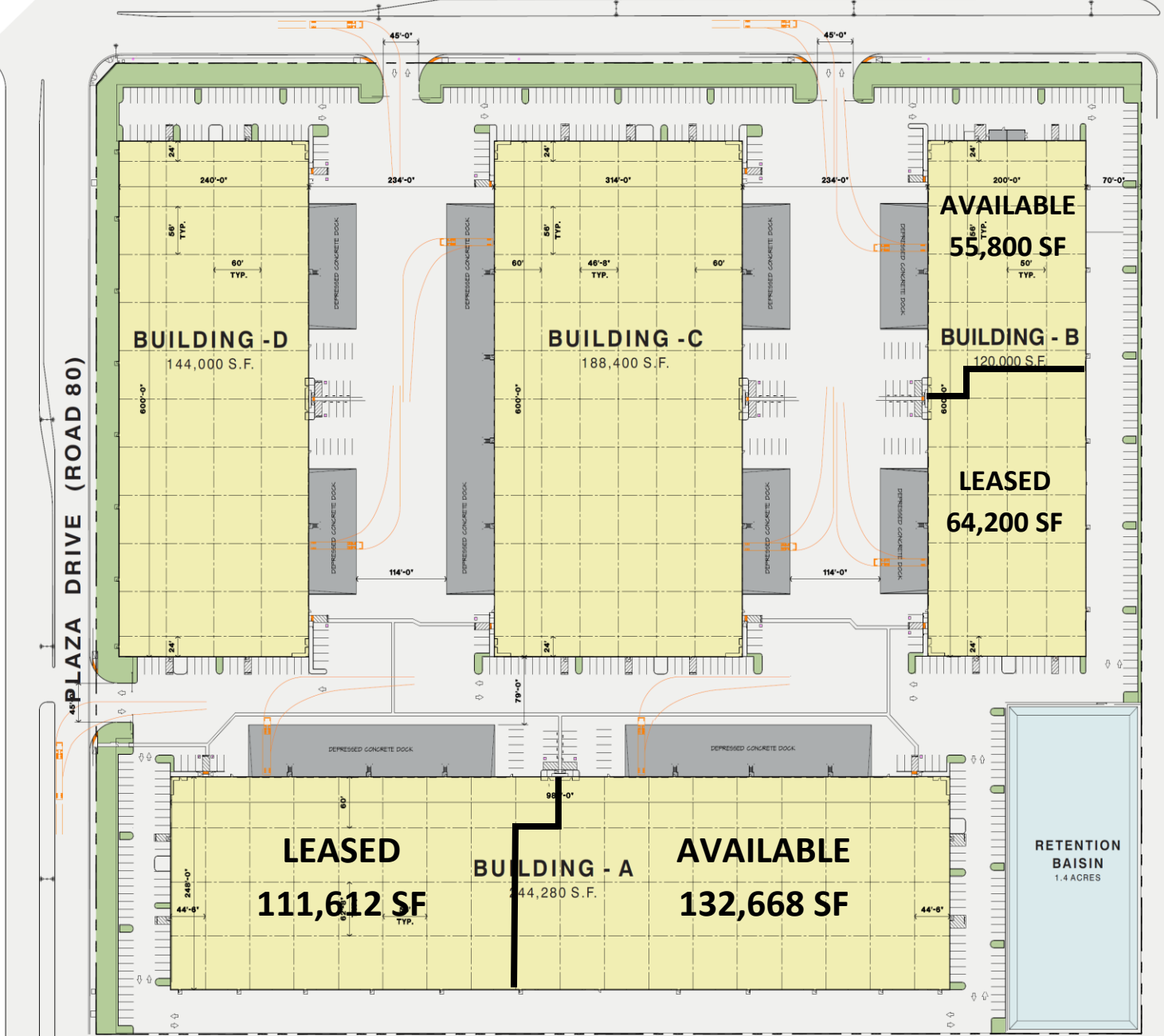
Diversified
DDevelopment
Group

7519 N. Ingram #104, Fresno, CA 93711

Google

DDG - 697

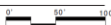
RIGGIN AVENUE (AVE 312)

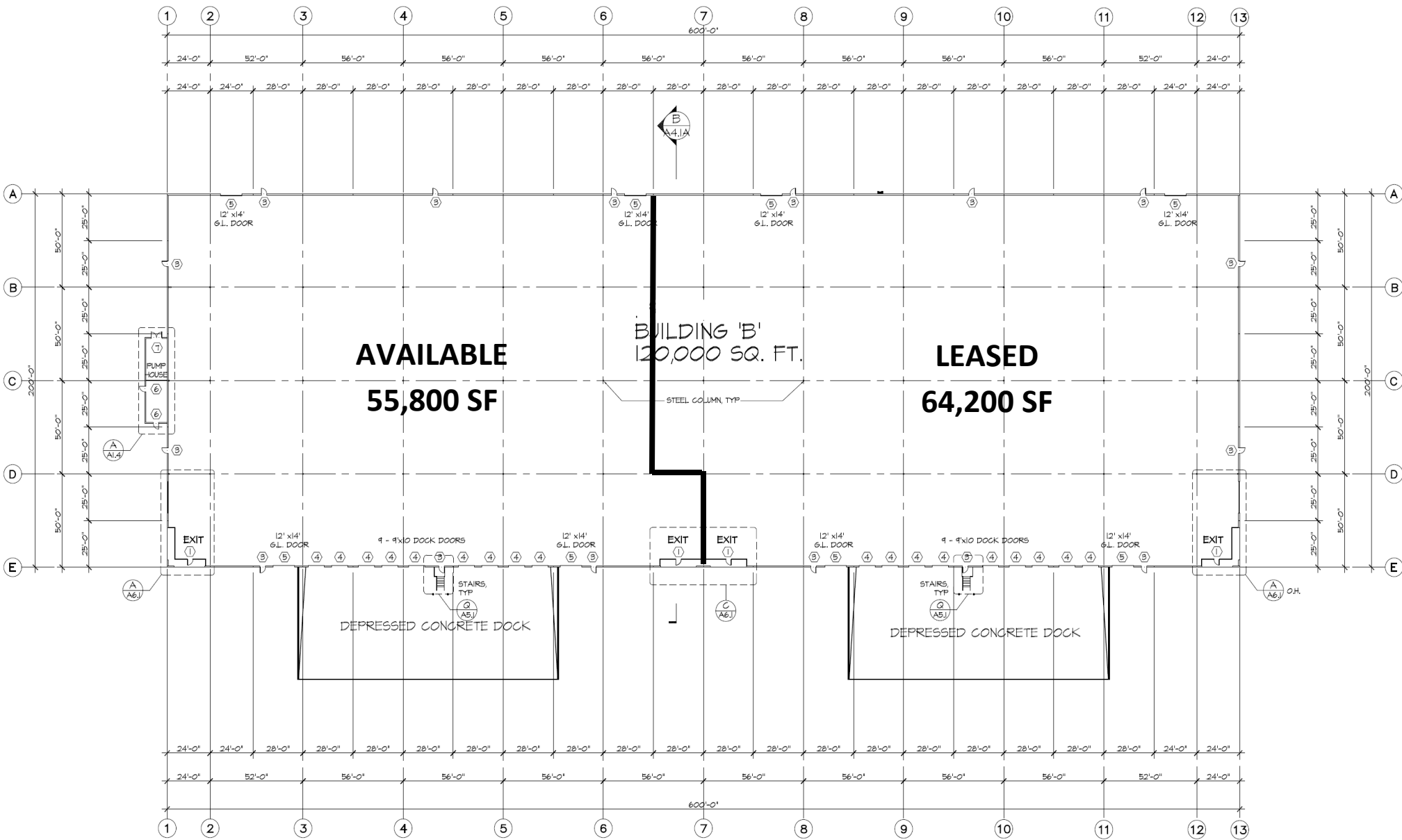


J B B DEVELOPMENT

7519 N. INGRAM , SUITE 104
FRESNO, CA. 93704
PH 559.225.6363

1 SITE PLAN





FLOOR PLAN BUILDING - B
 SCALE: 1" = 30'
 NORTH

DDG 120V

SPECIFICATIONS

BUILDING SIZE:	120,000 SF
SPACE AVAILABLE:	55,800 SF
DIMENSIONS:	200' x 300' and 328'
COLUMN SPACING:	56' x 50'
CONCRETE WALLS:	8"
CONCRETE SLAB:	6", laser screed
CLEAR HEIGHT:	30' minimum clear height
ROOF CONSTRUCTION:	Panelized System
ROOFING:	.60 TPO
SKY LIGHTS:	4' x 8' - 4 per bay
DOCK:	234' truck court between buildings
DOCK CONSTRUCTION:	60' dock apron, reinforced 6" concrete, ±1% slope
TRUCK DOORS:	Nine (9) 9' x 10' dock high doors and four (4) 12' x 14' grade level doors.
FIRE SYSTEM:	K-17 ESFR System with 150 horsepower booster pump.
OFFICE:	Build to Suit
LOCATION:	Southeast corner Plaza Drive and Riggan Visalia, CA 93291

For further information, please contact
Marcus Pignotti

(559) 225-6363, ext. 8